

Welcome to

THE ISLAND OF DONSÖ

The pearl of the west coast archipelago





Discover Donsö – a unique, living island!



A car free island

The southern archipelago is a group of genuine islands and skerries close to the City of Gothenburg, Sweden's second city. Donsö is one of the major islands in this breathtaking archipelago. It's quite small and only has around 1,500 permanent residents.

When you step ashore on Donsö, your first impression is one of an authentic fishing village. The harbour is the heart of the island, where the shipping and fishing industries play central roles.

Stroll along between boathouses, shops and narrow streets. Take a swim in the sea or why not enjoy fresh-caught fish and seafood!

You'll find beautiful natural landscapes shaped by the wind and sea on the island's northern and southern areas. Donsö is worth a visit at any time of the year, but summer is perfect for anyone wanting to explore everything the island has to offer! There are no cars on Donsö, and residents drive flatbed mopeds and electric golf carts!

*Your first impression is one
of an authentic fishing village*



*Enjoy 4 km of nature trail
that take you around the island*



Barren cliffs and lush woods

Donsö has a unique archipelago environment. Inland from the harbour, the road winds its way between white picket fencing and tightly packed wooden dwellings. Homes rub shoulders with each other, and the many boathouses surrounding the harbour sport the name plaques of fishing boats. Since no cars are allowed on the island, it's the perfect place for a long walk or bike ride. Stroll along narrow streets between boathouses and flatbed mopeds down by the harbour or enjoy the 4 km of nature trail that takes you around the island! The paths consist of 2 km on the northern part of the island and 2 km on the southern part.

When you walk around the island and the two trails, the distance is almost 10 km! The nature trails take you through lush woods and sheep pastures and past cliffs to Donsö's highest point with its stunning view of Vinga lighthouse. Take a break and treat yourself to a moment's rest and perhaps a snack with a view before continuing to discover the island. More than 500 different species of plant grow here, several of which are rare. Bird watchers will appreciate the opportunity to see a variety of seabirds up close, and there's every chance of seeing seals in the waters around the island!



Donsö before and now

Donsö has been involved in shipping for generations, and the island's first tanker was built in the early 1930s. Since then, Donsö has grown into an important fishing, shipping and business community. Today there are around 14 shipping companies and a number of major fishing vessels. They say the people of Donsö either work in fishing or shipping, which is not far from the truth. Over the years, the island has maintained and developed its strong maritime character.

Take a look at the information board on the quayside, that tells part of Donsö's history and exciting future. And don't miss to explore the sculpture Archipelago fishermen, made by the artist Svenrobert Lundquist. The sculpture Kal å Ada, placed outside the main entrance to the amusement park Liseberg, is also one of his work of art. It's also worth mentioning that the Stena Group's founder, Sten A Olsson, grew up on the island!

*The island has maintained and developed
its strong maritime character*



*Enjoy fresh-caught
fish and seafood*



Seafood and local delicacies

There is a wide range of services near the harbour, such as Yngves, a well-sorted food store, a welcoming flower shop and when the sun is shining, enjoy the ice cream bar! Don't miss the Popsicle Café, the Harbour Shop and Pizzeria Noretta with outdoor seating. Want to enjoy fresh-caught fish and seafood? Then Fiskeboa is the go-to place. All year-round it provides the community with seafood and local



delicacies such as smoked shrimp, different kinds of pickled herring, seafood pâté and much more. Smoking salmon over an open fire is a craft that demands love and know-how. Pay a visit to Skärgårdens Rökeri, a much-appreciated smokehouse, where you can buy Donsö salmon, a freshly smoked local delicacy. No matter what you crave, you're sure to find something delicious on Donsö.



A warm welcome at the ice warehouse

At the foot of the pier in Donsö Harbour you'll find Isbolaget, an old ice warehouse for fishing boats, these days converted into a restaurant and hotel. The old warehouse once produced ice in great quantities for keeping fish fresh in the holds of fishing boats whose home port was Gothenburg.

Today's fishing boats have their own means of keeping their cargo cold and fresh. But the story of Donsö's old ice warehouse lives on in the building, where years of gnawing wear from the ice have left their

mark on the walls, contributing to the restaurant's nautical charm. The food reflects the character of the old building, and the menu boasts well-prepared, classic dishes that always leave you satisfied. And there's a lot more than seafood to choose from!

Isbolaget has a popular, glazed terrace that is open come rain come shine, wind or weather, and where the outdoor bar also offers beautiful sea views! In the hotel, all rooms offer a fantastic view; the harbour or the sea!



*Well-prepared, classic dishes
that always leave you satisfied*



Smooth rocks, secluded bays, sandy beaches and public bathing areas

Enjoy a swim in the sea

On Donsö, a refreshing swim in the sea is never far away! Smooth rocks, secluded bays, sandy beaches and public bathing areas provide excellent freedom of choice for swimming and sunbathing. Korsholmen is close to the guest harbour, while Lökholmen on the east side of Donsö, offers both a bathing jetty and a diving tower!

New facilities, the Hunnebön swimming area, close to the Donsö pier, opened during the spring 2021. Hunnebön offers a barbecue area

with outdoor and indoor seating, to help you make the most of your time by the sea, even when it's windy! There is also an outdoor shower, if you need to rinse off the sea salt after a dip.

The places mentioned above are great for swimming, but you'll have no trouble finding your own special place on the island. Whether you're looking for a quick dip or a lazy day sunbathing, Donsö's stunning landscape never disappoints!

DONSÖ GUEST HARBOUR – OPEN ALL YEAR AROUND

The harbour was recently altered and expanded to handle an increasing number of leisure craft

NUMBER OF BERTHS

- About 100 berths inside of the west pier in the harbour
- In addition there are green posted vacancies
- If there is a red sign posted, the berth is occupied

Depth in harbour: 4,5 - 5 meters

Mooring: Alongside, boom or anchor

HARBOUR FEE

[You will find information here.](#)

Service included in the harbour fee

- There are toilets and showers available. A code is required, printed on the harbour fee receipt.
- There is a washing machine available during the summer season
- Access to the internet through free WiFi in the harbour
- First aid – There is a defibrillator nearby the toilets by the western pier

FUEL UP

On Istappen you can fuel up with petrol and diesel.

CONTACT

Harbour host: During summer +46 739 927 256, donso@donsohamn.se

Harbour master: Jonas Backman +46 704 221 222, donso@donsohamn.se

Address: Donsö Hamnväg 35, SE-430 82 Donsö

Website: donsohamn.se



HOW TO GET TO DONSÖ

IT IS EASY TO GET TO DONSÖ

- By regular boat traffic from [Saltholmen boat terminal](#)
- By leisure craft – welcome to [Donsö Guest Harbour](#)

There are several options to get to Saltholmen boat terminal from central Gothenburg

- Tram no. 11 – takes about 35 minutes
- Bus no. 114 (Ö-snabben) – takes about 25 minutes
- By car

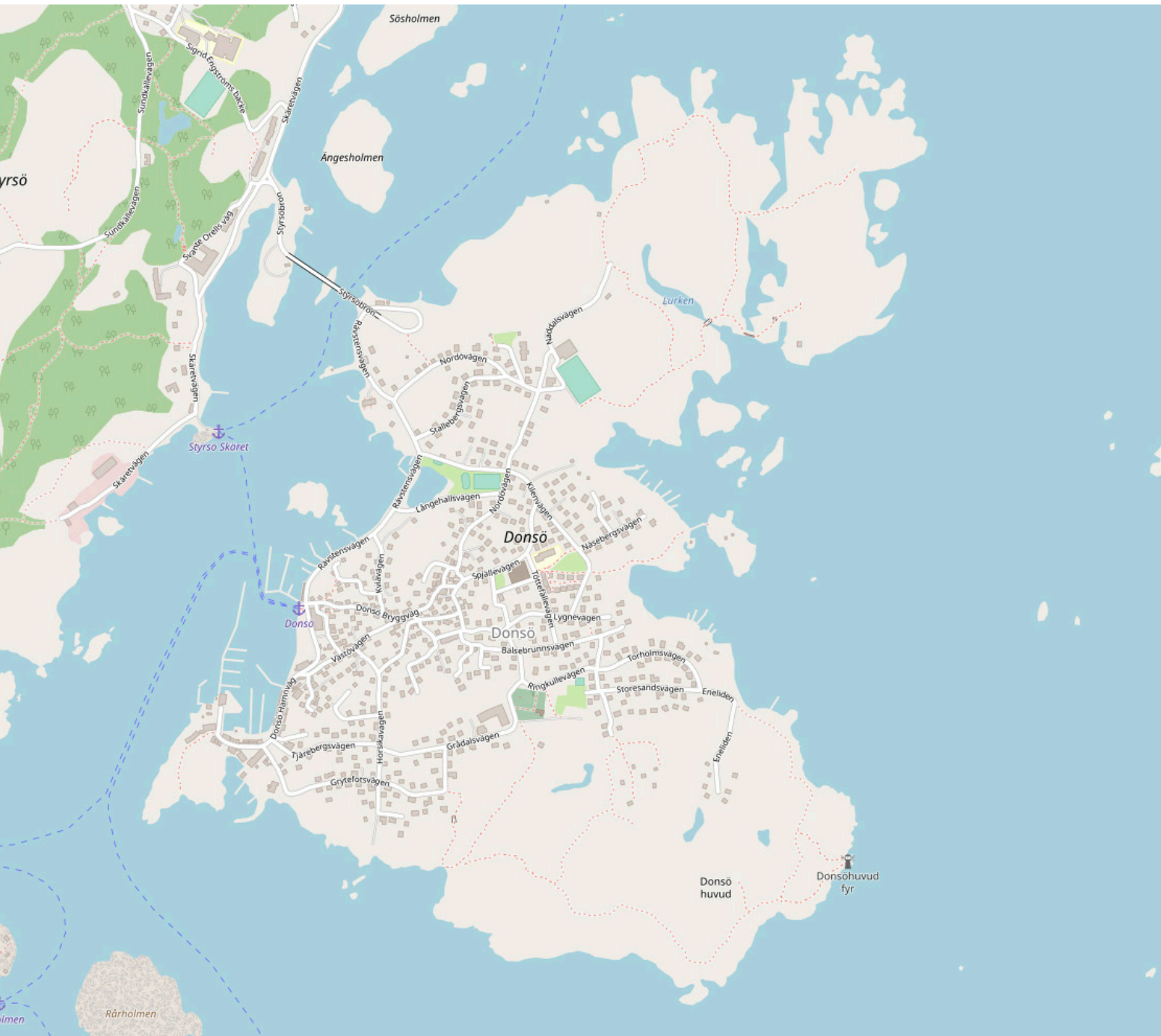
From Saltholmen boat terminal you continue by boat no. 281 (Saltholmen–Vrångö). Saltholmen boat terminal to Donsö is served once an hour Mondays to Saturdays, and somewhat less on Sundays. It takes about 18-37 min, depending on boat-type and route. Visit [Västtrafik's Travel Planner](#) for schedules and more details.

PARKING AT SALTHOLMEN – DONSÖ IS A CAR FREE ISLAND

Our recommendation is to park at the Långedrag tram stop parking lot, 1.3 km from Saltholmen, and then take a walk or hop on the tram to the Saltholmen boat terminal.



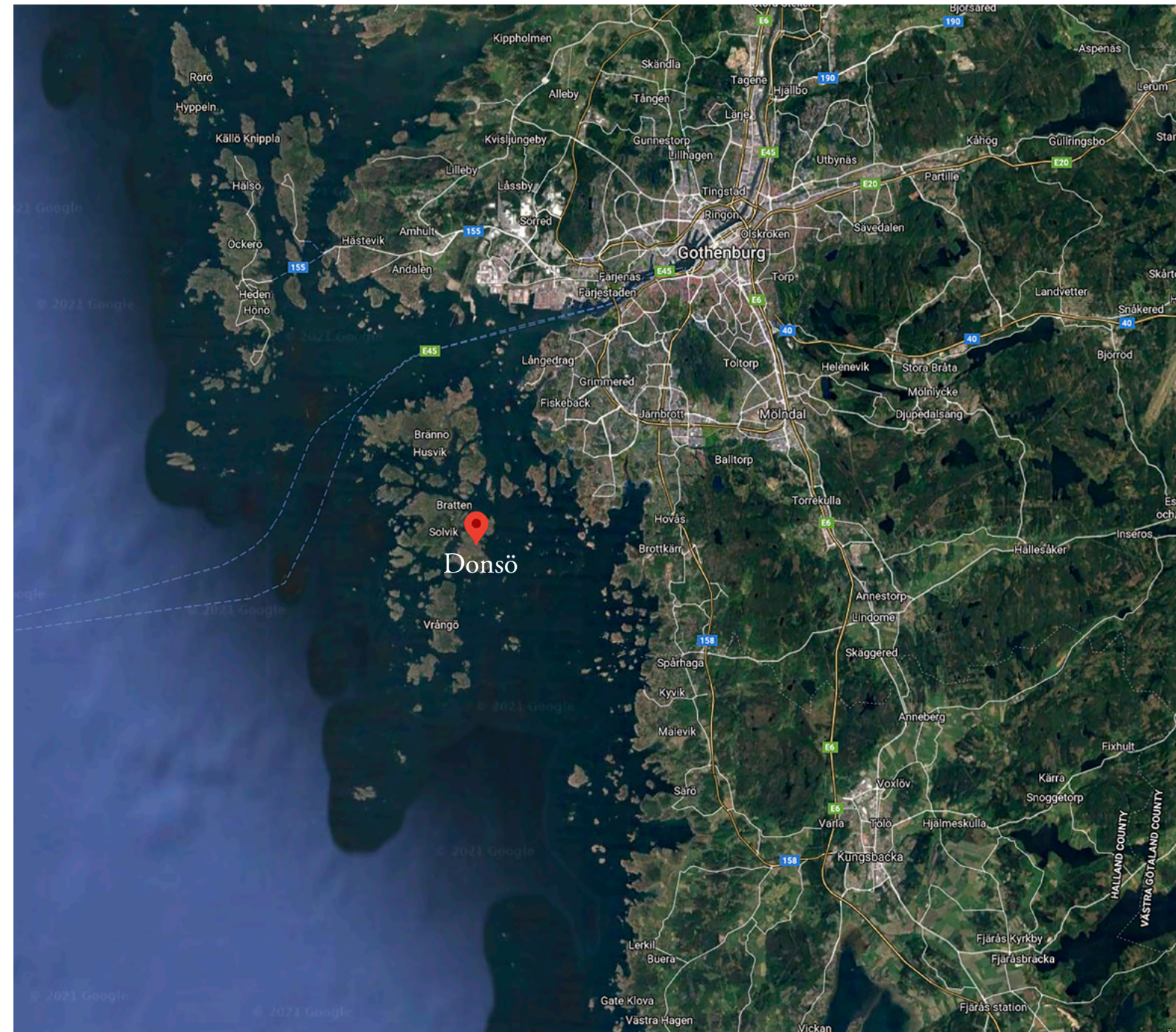
*Donsö – a stone's throw from
the City of Gothenburg*



[Link to map](#)



Karta: OpenStreetMap



LINKS TO SERVICE IN CONNECTION TO DONSO HARBOUR

[Donsö Harbour](#)

[Donsö IS](#)

[Donsö Marin](#)

[Donsö Sea kayak](#) - Kayak and bicycle rental

[Fiskeboa](#) - Fish and seafood

[Hamnaffären](#) - Hardware and supply store

[HNW Marine](#)

[Isbolaget](#) - Restaurant and hotel

[Istappen](#) - Marine service station

[Pizzeria Noretti](#)

[Popsicle Café](#)

[Skärgårdens Rökeri](#) - Smoked Salmon

[Styrsöbolaget](#) - Public transport by boat

[Trädgårdsstation](#) - Flower shop

[Västrafik](#) - Public transport

[Yngves Livs](#) - Well-sorted food store

